

Compute the tangent line to the curve $y = x^3 - x$ at the point $(2, 6)$.

Compute the tangent line to the curve $y = x^3 - x$
at the point $(2, 6)$.

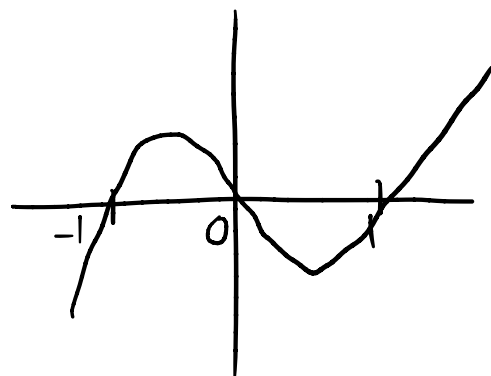
25/8/25

$$\frac{dy}{dx} = 3x^2 - 1$$

$$y = x(x+1)(x-1)$$

$$\text{At } x=2, \frac{dy}{dx} = 3(2)^2 - 1 = 11.$$

The tangent line has a slope $\frac{dy}{dx}$.



$$y - y_1 = m(x - x_1)$$

$$\Rightarrow y - 6 = 11(x - 2)$$

$$y = 11x - 22 + 6$$

$$\therefore y = 11x - 16$$